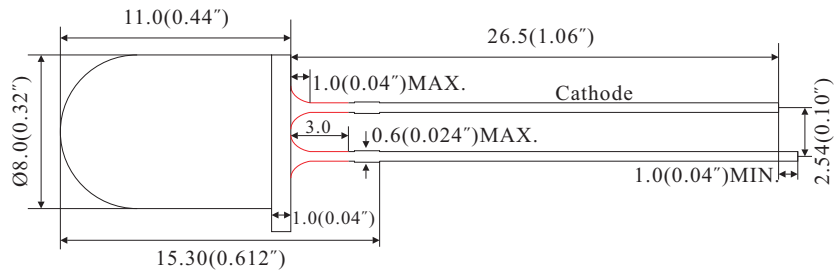
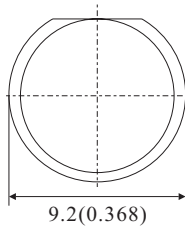




## PACKAGE DIMENSION

**TY-80UR5TM40-1500**



### Selection Guide

Part No.	Dice		Lens Color	(If=20mA)	Viewing Angle
	Raw Material	Emitted Color		TYP. (Mcd)	
TY-80UR5TM40-1500	AlGaInP	Ultra Bright Red	Tiny Milky	1500	40°

### Absolute Maximum Ratings at TA=25°C

Parameter	Symbol	Maximum Rating	Units
Power Dissipation	PD	45	mW
Peak Forward Current <sup>4</sup>	IFP	100	mA
Forward Current	IF	20	mA
Reverse Voltage	VR	5	V
Capacitance	C	25	pF
Operating/Storage Temperature	TA/TSTG	-40°C to +85°C	
Lead Solder Temperature	TSOL	260°C for 5 Seconds	

### Electrical / Optical Characteristics at TA=25°C

Parameter	Symbol	TYP.	MAX.	Units	Test Condition
Peak Wavelength	$\lambda_{peak}$	627	-	nm	IF=20mA
Dominant Wavelength	$\lambda_D$	620	-	nm	IF=20mA
Spectral Line Half-width	$\Delta\lambda$	20	-	nm	IF=20mA
Forward Voltage	VF	1.90	2.25	V	IF=20mA
Reverse Current	IR	-	10	uA	VR=5V

Notes:

1. All dimension are in millimeter (inches);
2. Tolerance is  $\pm 0.25\text{mm}(0.01\text{'})$  unless otherwise specified;
3. Not recommend to solder within 3mm from the resin;
4. 1/10 Duty Cycle, 0.1ms Pulse Width.